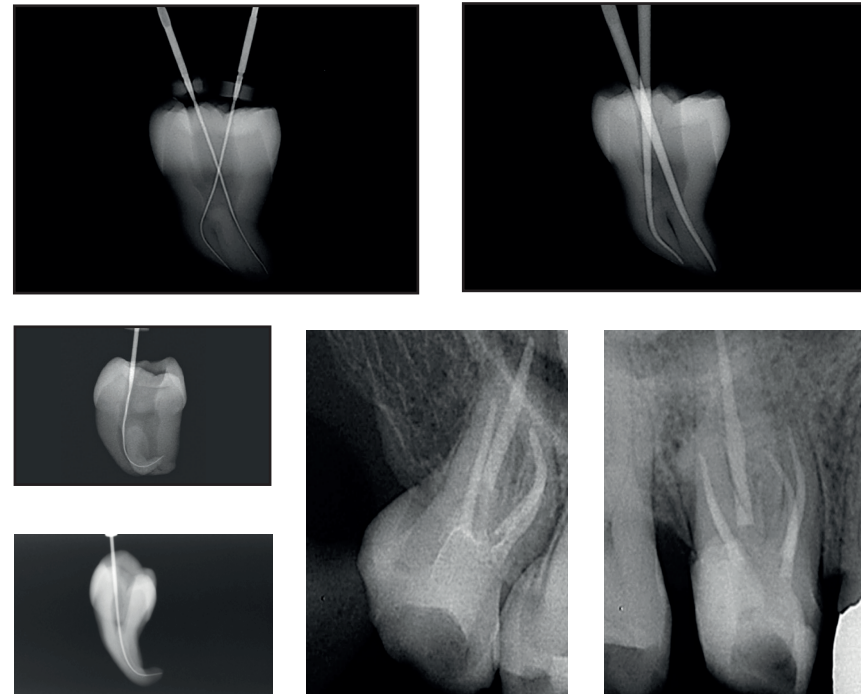


Unique. This is how TriAuto ZX2 convinces its users.

Unique, compact and innovative - a convincing trio which can not only be used for endodontic treatments thanks to its future-oriented concepts, but can also alleviate it considerably. The new endodontic handpiece TriAuto ZX2 comes up with smart operating concepts, convincing safety functions and efficient workflow due to fewer instrument changes. Above all, the focus is on the mechanical preparation of the apical patency which can now be carried out by the practitioner easily and safely at speed. Our users are already convinced of the new functions of the TriAuto ZX2 and its advantages for treatment procedures.



Clinical images are provided by Dr. Yoshi Terauchi / Dr. Toshihiro Ushikubo / Dr. Tai Gega Apical

New: Mechanical preparation of the apical patency!

The apical patency plays an important role for the endodontic preparation of the root canal. What used to require a lot of dexterity and sensitivity with the manual file, can now be carried out mechanically with TriAuto ZX2 - easily and safely. Rotating files with a size #10, assist in this respect the mechanical preparation of the glide path and in this way guarantee the apical patency for successful root canal treatment.

„The new TriAuto ZX2 makes control of the preparation process easier. OGP and OTR: Two decisive, new and innovative functions form a symbiotic relationship of safety and efficiency to alleviate mechanical preparation.“

Dr. Sebastian Riedel,
Endodontic Private Practice
Berlin

„The TriAuto ZX2 is an extraordinary device, simple to use with its wireless handpiece and very reliable thanks to the OTR motion. The integrated apex locator avoids the use of a connection cable. It is the ideal help for those who perform endodontic treatments in several operative units or in several praxis, far from each other.“

Dr. Emanuele Ambu,
Endodontic Private Practice
Bologna, Italy

„I can't do endo treatment without this function after using TriAuto ZX2.“

Dr. Yoshi Terauchi,
Endodontic Specialist



Distribution
J. Morita Europe GmbH
Justus-von-Liebig-Str. 27a
63128 Dietzenbach
Germany
T +49. 6074. 836 0, F +49. 6074. 836 299
www.morita.com/europe

Development and Manufacturing
J. MORITA MFG. CORP.
680 Higashinami Minami-cho, Fushimi-ku
Kyoto 612-8533
Japan
T +81. 75. 611 2141, F +81. 75. 622 4595
www.morita.com

Subject to technical changes and errors.
JME DE FA 0317 *1.

Diagnostic and Imaging Equipment



Treatment Units



Handpieces and Instruments



Endodontic Systems



Laser Equipment



Laboratory Devices



Ingeniously simple and absolutely safe. Perfect for any root canal.

TriAuto ZX2

Thinking ahead. Focused on life.



Unique. Compact. Innovative.

Endodontic motor with measurement function.

Introducing the new TriAuto ZX2 in its innovative and modern design. As the successor of the TriAuto ZX cordless endomotor with integrated apex locator, it continues to be the only endodontic system on the market which combines both functions in one handpiece. With its easy, intuitive operation and automatic functions, it guarantees at all times for absolutely reliable and safe results.

The safety functions Optimum Torque Reverse (OTR) and Optimum Glide Path (OGP) are new features. OGP simplifies glide path creation whilst the OTR function protects against file breakage and microcracks by reversing the rotational direction when the torque level is exceeded. In this way, TriAuto ZX2 protects the natural tooth substance and makes the treatment even more efficient.

Efficient treatment with optimal view into the root canal

Integrated measurement function for results with millimeter accuracy

The apex locator integrated into the handpiece provides exact measurement results irrespective of rinsing fluids in the root canal. On the color display, the practitioner can see the distance of the file from the apex. Monitoring is also carried out by acoustic signals.

Easy application - short treatment period

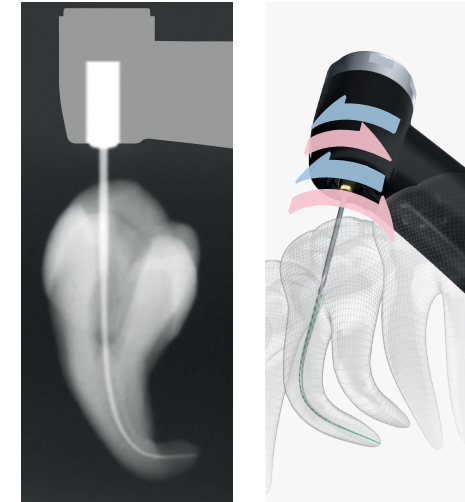
As all preparation stages are carried out mechanically, the practitioner can save a great deal of time: Eight pre-set programs where all relevant parameters are stored ensure short treatment sequences. Depending on requirements, speeds of between 100 and 1,000 rpm are available in the settings.

Small instrument head

With the small instrument head of the TriAuto ZX2, the practitioner has a direct view of the preparation area at all times. The internal file electrode acts as a backup here by optimizing vision and enabling a greater working length.



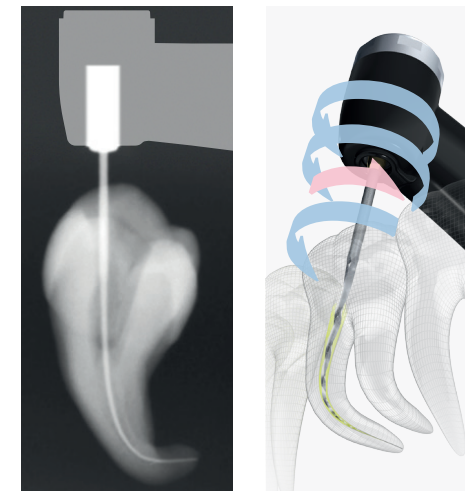
Absolutely safe thanks to innovative functions



Unique function for mechanical glide path creation

With the new OGP function, the practitioner can create the glide path with particular speed and reliability. The glide path is the initial step to actual canal forming and represents the optimum preparation of the root canal for safe and reliable endodontics. Rotating instruments make it possible to achieve a faster and more reliable preparation of the glide path than with hand

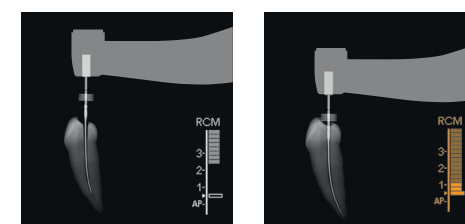
instruments. In combination with the OGP function, the instrument can be brought into the required working length without fracture, ledge formation or blocking



Prevention of file breakage and microcracks

The file is always subject to mechanical influences in the root canal which could lead to file breakage. For this reason, it is particularly important to limit torque for protecting the file. The OTR function enables the file to reverse its rotational direction upon reaching a certain torque. After rotating in reverse by 90 degrees, the file returns to the cutting direction.

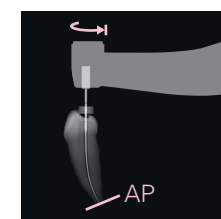
If the practitioner continues applying pressure to the file, this procedure is repeated after a further rotation of 180°. If there is no strain on the file, it continues cutting. The advantage: the file can move more easily in the canal and the original course of the canal can be retained and the debris is removed safely.



Automatic Stop Safety Function

The TriAuto ZX2 motor is linked with the canal measurement function. This feature makes endodontic treatment safer and much more efficient. The file position is shown in the display, and the motor stops or reverses

rotation as soon as the file reaches the end of the working length to prevent perforation.



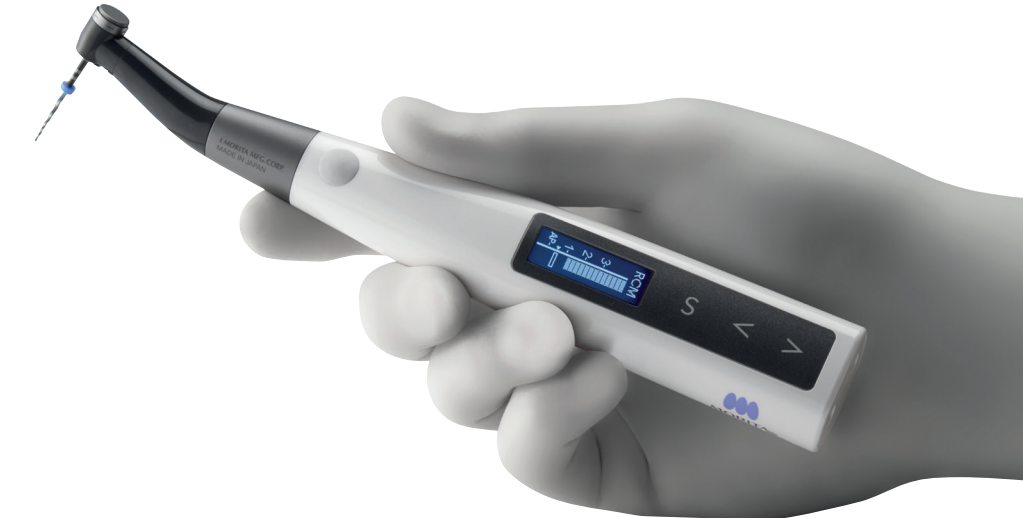
Optimum Apical Stop

When the file reaches the end of the working length, it reverses slightly. This reduces the possibility of file jamming and separation.

Flexible, light and intuitive to operate - for comfortable treatment

Cordless, very light handpiece

The handpiece only weighs 140 grams and ensures a well-balanced distribution of weight in the practitioner's hand. This is a guarantee for pleasant treatment and relaxes hand and finger muscles. In addition to this, there is no interfering cable which could interrupt the treatment process.



View of the file position on colored LCD display.

Whether left- or right-handed - the file position is always in perfect view

The LCD display is ideal for both left- and right-handed practitioners. Depending on requirements, the user can turn the display on the handpiece until it is in the perfect position to be seen. In this way, the practitioner is informed at all times of the position of the file in the canal as well as all the respective parameters. The TriAuto ZX2 offers the possibility of programming the parameters for an efficient treatment process additionally.

Technical details

Specifications		Battery Charger	
Name	TriAuto ZX2	Rated input voltage	AC 100- 240V
Model	TR-ZX2	Rated input frequency	50 - 60 Hz
Manufacturer	J. MORITA MFG. CORP.	Weight	ca. 280 g
		Dimensions (mm)	B 85 x H 75
		Order no.	6961
Functions			
Optimum Glide Path			
Optimum-Torque-Reverse		TriAuto ZX2 Handpiece	
Auto Start/Stop	Display	LCD	
Forward and reverse rotation	Weight	140 g	
Auto Torque Slow-down	Operation speed	100 - 1.000 U/Min	
Auto Torque Reverse	Battery	3,7 V Lithium Ion Batterie	
Auto Apical Slow-down	Charging time	max. 120 min	
Auto Apical Stop	Dimensions (mm)	B 30 x H 200	
Auto Apical Reverse			
Apical Torque-down	Accessories		
Optimal Apical Stop	Tester, Spray, Nozzle		